

## LanSchool v7.6

### Remove Distractions and Improve Learning on PCs, Macs, iPads, Linux and Thin Clients.

Today's teachers are faced with the challenge and opportunity of using technology to teach.

Computers are amazing educational tools, but they can also be a huge distraction to learning. The Internet, instant messaging, email and games are a constant temptation for students.

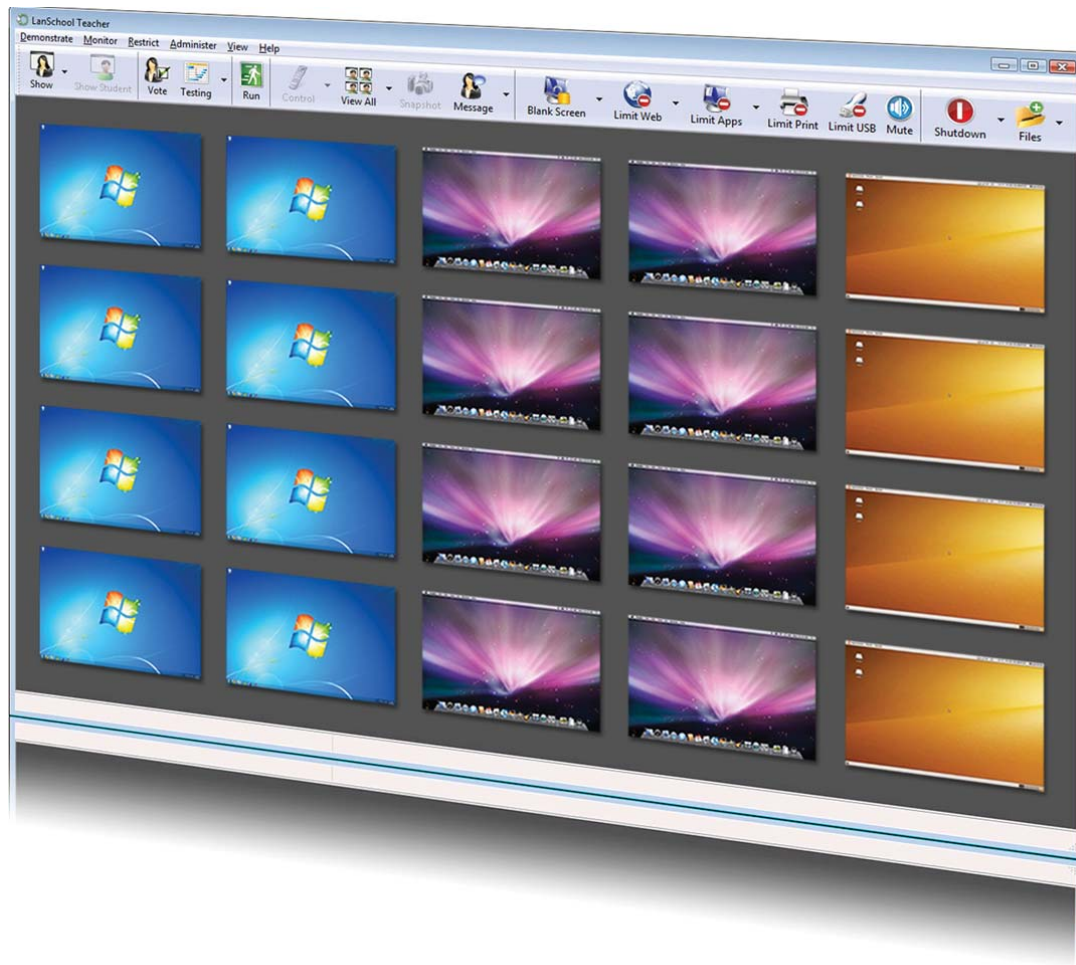
LanSchool v7.6 removes these distractions and gives teachers the tools and confidence to teach in a 21st century classroom.

**"LanSchool is the one essential tool teachers need to be successful in a 21st century classroom."**

—TOM LOCKWOOD, HEMLOCK PUBLIC SCHOOLS

#### LanSchool v7.6 helps:

- Facilitate learning by allowing the teacher to show their screen and audio to the students
- Remove distractions such as the Internet, applications, USB/CD-ROM drives and printing
- Keep students on task through real-time thumbnail monitoring
- Get students' attention by blanking out their screens
- Assist students through remote control and chat
- Assess student understanding through testing
- Provide audio listening and chat in language labs
- Efficiently distribute and play video files



**//CODiE//**  
2011 SIIA CODIE FINALIST



2008 SIIA  
**//CODiE//**  
FINALIST



# Key Features

\*NEW FEATURES IN LANSCHOOL V7.6

## LanSchool Console

- Runs on Macs, PCs, Linux\*, Thin Clients, and iPads
- Manage one, selected or all students
- Randomly select a student to answer a question
- Supports dual monitors for teachers and students
- Microsoft, Novell and Active Directory login names are displayed

## Show Teacher to Students

- Show the teacher's screen on the student monitors before or after student login
- "Full screen" mode projects the teacher's screen to the entire student screen and locks-out the student keyboard and mouse
- "Windowed" mode projects the teacher's screen in a sizeable window on the student computer
- Draw on the screen to highlight important items
- Co-browse the Internet, student browsers follow the teacher
- Broadcast the teacher's audio to student computers
- Efficiently distribute and play video files

## Show Student to other Students

- Allow a student to demonstrate their screen to the other students in the class

## Thumbnail Monitoring

- View up to 3000 high color thumbnails at the same time
- Arrange thumbnails to represent a classroom
- ScreenFeed shows a slideshow of student screens\*
- Monitor only selected thumbnails
- Watch the active application and web site as icons on the thumbnail

## Blank Student Screens

- Grab the students' attention by blanking their screens, showing a custom message and locking out their keyboards and mice before or after login\*

## Remote Control

- Help a student by taking control of their computer's monitor, keyboard and mouse
- Remote control multiple computers at the same time

## Student Voting and Testing

- Ask the students "yes/no", "multiple choice", short answer or essay questions (secure blue book)\*
- Watch the results in real-time and show the results to students\*
- Export test results to a .csv file
- Randomize student questions

## Send a Message

- Send a text message to all or selected students

## Student Question/Chat

- Students can send a question to the teacher
- To respond, teachers can initiate a text-based chat session with the student

## Muting

- Turn student speakers on or off from the teacher's console

## Web Limiting

- Limit web sites on Windows Internet Explorer, Firefox and Chrome.\*
- Limit web sites on the Mac. (Safari and Firefox)\*
- Display allowed web sites to students

## Application Limiting

- Allow or block specified applications
- Clear desktop button stops all running student applications

## Print Limiting

- Allow or block printing for all or selected students

## Drive Limiting

- Allow or block USB and CD-ROM drives for all or selected students

## Application and Keystroke Monitoring

- Monitor applications and keystrokes on student computers
- Alert the teacher when a student types banned words

## Send and Collect Files and Directories\*

- Send and collect files and directories\* to and from student computers

## Power/Admin features

- Shutdown, logoff or restart student computers
- Power on computers remotely using Wake-on-LAN
- Remotely login Windows computers

## Running Applications

- View all running applications on a student's computer and immediately terminate an application

## Internet History

- View student browsing history across IE, Firefox, Chrome and Safari

## Screen Snapshot

- Take a snapshot of a student's current computer screen

## Security

- Active Directory-based secure mode
- Password-based secure mode
- Security Monitoring tool logs all LanSchool activity

## Student upgrade

- Upgrade LanSchool student software from the teacher's console

## Anti-tampering controls

- Discourages students from unloading or disrupting the software

## Wireless cart and 1:1 support

- Supports wireless laptop carts, 1:1 and BYOD\* programs
- Make students join a class based on a pre-configured roster
- Automated class lists based on SIS exports\*
- Battery monitoring alerts on low and critical battery states

## SYSTEM REQUIREMENTS

LanSchool v7.6 supports any combination of computers running Windows 98, Windows 2000, Windows XP-32, Windows Vista-32/64, Windows 7-32/64, Windows 2003 and 2008 Terminal Server, MultiPoint Server 2010 and 2011, Citrix, NComputing U,X and L series, Mac OS 10.4 and higher, iOS3 and iOS4 for iPads and the Vernier LabQuest\* device.

The only exception is the LanSchool teacher console for the Mac, which will only run on Intel-based Mac hardware running OS 10.5 and higher.

Ubuntu\* Linux 10 and 11 are supported as a LanSchool Student, some features are not available.

Listed below are the minimum requirements necessary to run LanSchool v7.6 on both the teacher and student computers:

### RAM

- 48 MB for Windows 98
- 96 MB for Windows 2000
- 128 MB for Windows XP
- 256 MB for Windows Vista/7
- 256 MB for Ubuntu
- 512 MB for Mac OS X

### PROCESSOR

166 MHz Intel® Pentium® processor or faster

### PROTOCOL STACK

- All computers must be configured with TCP/IP
- 802.11 wireless is supported, however enterprise class access points are recommended



LanSchool Technologies, LLC  
a subsidiary of Stoneware

770 West 210 South  
Orem, UT 84058

877.370.5546 [toll free]  
240.331.1316 [fax]  
sales@lanschool.com  
<http://www.lanschool.com>