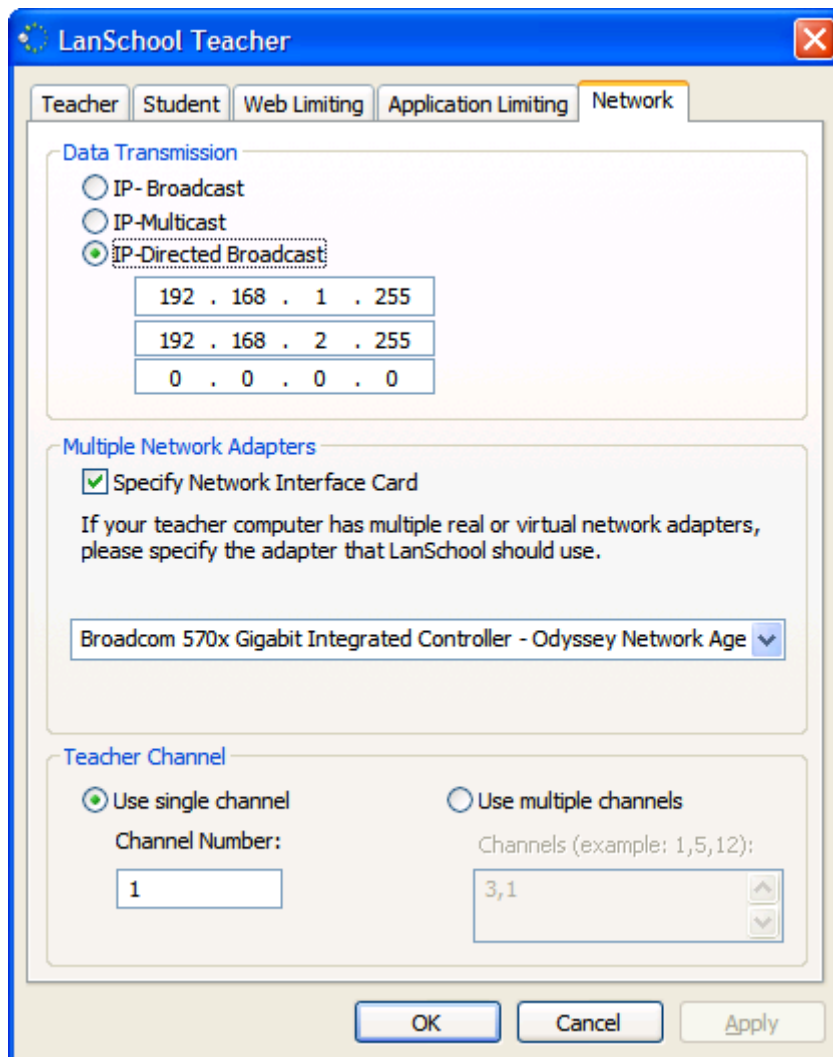


LanSchool, IP-Subnets, and V-LAN's

LanSchool assumes all student machines will be on the same IP-subnet as the teacher machine. However, it is possible to configure LanSchool to function properly even when the teacher resides on a different subnet (or even a separate VLAN segment) from the student computers.

IP-Subnets

If the teacher is on a different IP-Subnet from the student computers, the default “IP-Broadcast” UDP packets will not be able to get from the teacher’s PC to the students’. You will have to configure the LanSchool Teacher.exe utility to use either IP-Multicast or IP-Directed Broadcast packets. To do this, select the LanSchool Configure... menu option on the teacher’s computer and click on the Transport tab in the resulting Configure LanSchool dialog.



The Data Transmission section will let you make the selection. For either IP-Multicast or IP-Directed Broadcast packets to function, you will have to make sure that your network routers have these features enabled. Your network administrator should be able to help with this. You can use the **DirBCastAddr.exe** utility (in the Utilities folder of your LanSchool CDROM) to get the proper IP-Directed Broadcast address.

V-LAN's

Some VLAN hardware will make the teacher's subnet unreachable from the students' subnet. For this environment to properly function with LanSchool the teacher machine must be configured to use either IP-Multicast or IP-Directed Broadcast (see previous section.) The V-LAN must be configured to forward IP Multicast data in the address range of 239.0.208.0 to 239.0.208.255 or to allow IP-Directed Broadcasts to traverse from one segment to the other. It also must allow all traffic on port 796 (0x031C) and port 1053 (0x41D) (either source or destination) to freely move between the subnets. If this cannot be configured, LanSchool will not properly function.

If only the UDP data can get through, then the teacher can still broadcast her screen to the students and blank all student screens. However, the teacher will not be able to View students in the Student List, so will not be able to remotely view student screens. Both UDP and TCP traffic need to be able to traverse the V-LAN subnets.